

# EASTMAN

## Installation Tool Catalog





**Please follow manufacturer's recommended use and safety guidelines. Use Proper safety equipment and exercise caution when handling sharp objects.**

# CONTENTS

## KNIVES & BLADES

1



## SCRAPERS & BLADES

3



## CLEANING SQUEEGEES

5



## HANDLED SQUEEGEES

6



## SAFETY & SECURITY HANDLED SQUEEGEES

8



## SAFETY & SECURITY HANDLED 3/8" SQUEEGEES

9



## REAR WINDOW / REACH TOOLS

10



## SQUEEGEE ESSENTIALS

11



## PPF/WRAP/VINYL & WRAPS

13



## HARD CARDS

16



## TUBE SQUEEGEES

17



## INSTALLATION ACCESSORIES

18



## MEASURE/MARK & TRIM

20



## SPRAYER & ACCESSORIES

21



## CLEANING/PREP & CHEMICALS

23



## SLITTER & ACCESSORIES

25



## METERS

26



27 SAFETY FILM LABELS

29 PLOTTER BLADES / CUTTING STRIPS

30 GRAPHTEC PARTS / FC9000 / FC8600

# KNIVES & BLADES

## STANDARD 9MM KNIVES



**50148578**

**OLFA "SILVER" SS KNIFE**

The original Olfa stainless steel knife.

**50149232**

**NT PRO A1 "RED DOT" KNIFE**

Regarded by many installers as the finest professional knife available. The blade can be advanced in 1/2 segment increments for precision control. Right or left hand use. Now includes a stainless steel blade.

**50149242**

**OLFA "SILVER 2" KNIFE**

Significantly improved over the original "Olfa Silver". Features right or left hand use, blade position auto-lock, and one-segment click-action.



**50149239**

**OLFA A1 KNIFE**

Used for film pattern cutting and trimming. Features a molded plastic handle for maximum control and comfort. Right or left hand use.

**50149231**

**PLASTIC UTILITY KNIFE**

Used for film pattern cutting and trimming.

**50149230**

**NT INJECTOR KNIFE**

Used for film pattern-cutting and trimming. Holds five blades for automatic blade replacement capabilities.

## STANDARD 9MM BLADES



**50157813**

**OLFA AB50B CARBON SNAP BLADES**

Standard carbon snap blades with superior sharpness and edge retention. This 9mm blade fits most standard duty knives and has 13 cutting edges per blade. Pack of 50.

**50184741**

**OLFA AB10S STAINLESS STEEL SNAP BLADES**

Pack of 10. The industry standard when it comes to snap blades for film and pattern cutting. Thirteen cutting edges per blade. Use in most standard duty knives

**50149194**

**NT BA50SS STAINLESS STEEL SNAP BLADES**

Stainless steel snap blades from the makers of the "Red Dot" knife. Use in 9mm and multi-blade cartridge knives. Pack of 50.

**50175908**

**OLFA ULTRAMAX ABB50B CARBON SNAP BLADES**

These blades are double-honed for extreme sharpness and are 25% sharper than the standard duty carbon blade. Eight cutting edges per blade, 50 blades per pack. Fits most standard Olfa knives.

**50149243**

**OLFA AB50S STAINLESS STEEL SNAP BLADES**

Pack of 50.

## NOTE

All knives are packaged with a carbon steel blade except the Olfa Silver, the Olfa Silver 2 and the NT Pro A1 "Red Dot" Knife.

# KNIVES & BLADES CONT'D

## 8PT HEAVY-DUTY KNIVES & BLADES



**50149240**  
**OLFA LBB50B ULTRAMAX 8PT BLADES**  
Replacement blades for 50157269 heavy-duty knife. Triple-honed for extremely sharp edge. Ideal for cutting thick films, 7 mil or greater. Pack of 50.

## 30° KNIFE & BLADES



**50197875**  
**OLFA SAC1 KNIFE**  
Slim stainless steel body with a 30° angle blade for precision in pattern cutting. Great for graphics and paint protection. Use 50197876 replacement blades.



**50197876**  
**OLFA A1160B 30° CARBON BLADES**  
Standard duty acute angle snap-off blade for use when precision is a must. Seven cutting edges per blade strip. Pack of 10.



**50251026**  
**PROKNIFE**  
Black Stainless Steel Professional grade knife with angled tip. The leading blade for wrap installation. Use 50251036 replacement blades

**50251036**  
**PROBLADE**  
10 pack 9mm 30° Red Staines steel snap blades snap blades



**50246313**  
**NT BD50 30° SNAP BLADES**  
30° Carbon steel snap blades from the makers of the "Red Dot" knife. Use in 9mm and multi-blade cartridge knives. Pack of 50.

### ANY BLADE CAN CUT OR SCRATCH GLASS!

It depends on the glass, edge of the blade and the angle of the cut. No matter what knife or blade you use, be sure to use a SHARP blade every time!

### TOOL TIP

Try the most popular knife and blade option for the various applications.

- Automotive/Residential Window Films use the Olfa Silver or Red Dot with the Olfa SS Snap blades.
- Paint Protection use the Olfa SAC1 and the Olfa 30 degree blades.
- Vinyl Graphics use NT Injector Cartridge Knife and the Olfa AB50B Carbon blades.
- Safety and Security Films use the KDS L22 GripFit Auto Lock Knife and the Olfa LBB50B Ultramax 8PT blades.

# SCRAPERS & BLADES

## 1" SCRAPERS & BLADES



**50149255**  
**1" CLIP SCRAPER**  
This effective scraper will accommodate standard or stainless steel 1" single edge blades as well as 50149195 plastic razor blades. Try the Lil Chizler in these handles for more leverage.



**50148556**  
**HEAVY-DUTY 1" RAZOR SCRAPER**  
Retractable safety scraper; intermediate blade position keeps the blade from sliding out while in use.



**50149184**  
**1" NEON MINI SCRAPER**  
Holds 1" single edge blade.



**50149185**  
**SINGLE EDGE BLADES**  
Use in any 1" blade holder. #9 Carbon steel single edge blade, non-rust aluminum back. (.009"/.2286 mm) Pack of 100.

**50197275**  
**1" SINGLE EDGE BLADES**  
Use in any 1" blade holder. #12 Carbon steel single edge blade, non-rust aluminum back. Pack of 100. (0.12"/.3048 mm)



**50149186**  
**1" SINGLE EDGE STAINLESS STEEL BLADES**  
Use in any 1" blade holder. Stainless steel, uncoated. (.009"/.23 mm) Pack of 100.



**50149195**  
**PLASTIC RAZOR BLADES**  
Perfect for removing leftover film and adhesive from surfaces that are easily damaged, such as rear window defrosters or other sensitive glass surfaces. Pack of 100.

## 3" SCRAPERS & BLADES



**50149249**  
**3" TRIUMPH SCRAPER**  
Smaller version of the regular Triumph. Designed to fit perfectly into corners.



**50149187**  
**3" TRIUMPH CARBON BLADES**  
Use in 3" Triumph Scraper (50149249). (0.20mm x 3") Pack of 10.

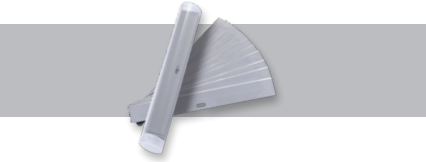
### TOOL TIP

Plastic razor blades are the most effective way to safely prep automotive glass. Although the blades are plastic, proceeding with caution is always a good idea.

## 4" SCRAPERS & BLADES



**50149250**  
**4" SCRAPER WITH EXTENDED HANDLE**  
4" scraper with extended handle allowing for better leverage. Use with 50149188 or 50149189 as replacement blades. Blade cover included.



**50149188**  
**4" CARBON SCRAPER BLADES**  
Fits the 50149250. (0.017mm x 4") Pack of 10.



**50149189**  
**4" CARBON SCRAPER BLADES**  
Fits the 50149250. (0.017mm x 4") Pack of 100.

# SCRAPERS & BLADES CONT'D

## 6" SCRAPERS & BLADES



**50149254**  
**6" TRIUMPH SCRAPER**  
Lightweight and maneuverable. Includes cover and one double edged blade.

**50157272**  
**6" ERGONOMIC TRIUMPH SCRAPER**  
An improved version of the angled 6" Triumph scraper with a more comfortable grip. Includes cover and one double edged blade.

**50149256**  
**6" ANGLED TRIUMPH SCRAPER**  
The handle is tilted at a 30° angle. Includes cover and one double edged blade.



**50212615**  
**6" ERGO TRIUMPH SCRAPER/ANGLED**  
An improved version of the standard 6" Triumph scraper with a more comfortable grip and tilted handle. Includes cover and one double edged blade.

**50149192**  
**6" TRIUMPH STAINLESS STEEL BLADES**  
Long lasting rust resistant stainless steel blade. Perfect for removing adhesive and other debris from glass surfaces. The double edge blade offers you more scraping than other blades. (0.15 mm x 6") Pack of 25.

**50149190**  
**6" TRIUMPH CARBON BLADES**  
Carbon steel offers strong capable scraping that lasts longer than stainless steel blades but rust more easily. Use these blades for scraping adhesive and other debris from glass surfaces. Double edged for more scraping per package. These blades fit any of the standard 6" Triumph Scrapers. (0.20 mm x 6") Pack of 25.



**50157413**  
**6" TRIUMPH STAINLESS STEEL HEAVY-DUTY BLADES**  
This rust resistant stainless steel blade is thicker and stronger than the standard 6" Triumph Stainless Steel Blades. A must have for those tough film removal jobs. A new product exclusively for the tinting industry. A must have for all residential and commercial installers. (0.20 mm x 6") Pack of 25.

### NOTE

All scrapers are packaged with a carbon blade.

# CLEANING SQUEEGEES



**50149285**  
**18" SQUEEGEE & CHANNEL**  
**50149281**  
**12" SQUEEGEE & CHANNEL**  
**50149296**  
**6" SQUEEGEE & CHANNEL**  
Stainless steel channel and soft rubber squeegee blade insert for use with the Unger Pro Handle. Used in flat glass cleaning process and in the final cleanup after the film installation to remove soap streaks or smudges

**50181302**  
**6" EXTRUDER CHANNEL**

**50149278**  
**140" SQUEEGEE BLADE**  
**50149277**  
**12" SQUEEGEE BLADE**  
**50149268**  
**18" SQUEEGEE BLADE**  
Replacement blades for Unger squeegee channel. Use for window cleaning, not installation.



**50207173**  
**36" HARD REPLACEMENT SQUEEGEE**  
Hard replacement rubber is idea for warmer working conditions and for optimum liquid removal on large, flat surfaces.

**50149282**  
**120" BLUE SQUEEGEE REFILL**  
Use in the Unger squeegee channel as a finishing squeegee for maximum water removal. Replacement blade for 50149436. Use with Extruder Channels (pg.5).

# HANDLED SQUEEGEES

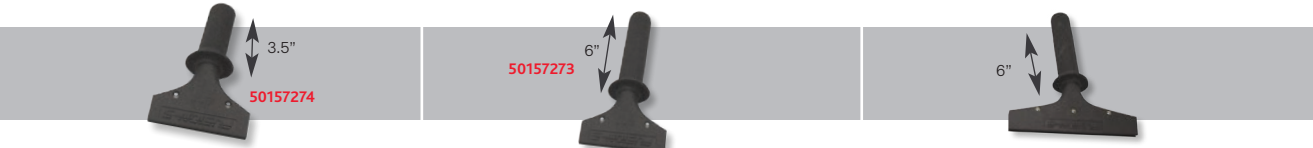


**50148565**  
**UNGER PRO (LATCH) HANDLE**  
The original Unger Pro Handle. For use with the stainless steel channels with black rubber for cleaning or blue replacement blades for installation.

**50157275**  
**UNGER ERGOTEC (SPRING) HANDLE**  
Features a spring mechanism for quick blade changing and a finger indent on the top of the handle for complete control. For use with the stainless steel channels with black rubber for cleaning or blue replacement blades for installation.

**50149328**  
**SUPER CLEAR MAX SQUEEGEE WITH HANDLE**  
Ready to use installation squeegees. The specially modified Unger handle and the angled sides of the squeegees makes these installation squeegees must haves.

**50213347**  
**5" FUSION SHORTY HANDLE**  
A revised version of the 50157274 - 5" Fusion Short Handle. This version is without the collar around the top of the handle. Designed to optimize your leverage in removing mounting solution. Holds any of the 1/4" thick 5" wide squeegee blades. Great for high performance automotive films and smaller residential windows.



**50157274**  
**5" FUSION HANDLE - SHORT HANDLE 3.5**  
These handles are designed to optimize your leverage in removing mounting solution. Great for high performance automotive films and smaller residential windows. These handles accommodate 5" squeegee blades.

**50157273**  
**5" FUSION HANDLE 6"**  
These handles are designed to optimize your leverage in removing mounting solution. Great for high performance automotive films and smaller residential windows. These handles accommodate 5" squeegee blades.

**50166576**  
**8" FUSION HANDLE**  
Ideal handle for all residential and commercial applications.



**50209485**  
**5" FUSION STRETCH HANDLE**  
**50209276**  
**8" FUSION STRETCH HANDLE**  
The Fusion Stretch handle is the latest design for installing flat glass and security films. These handles come in both 5" & 8" widths. This handle features a 14 1/2" metal extension and two rubber grip sections for maximum water removal.

**50184836**  
**GO DOCTOR BLUE (HARD)**  
**50184916**  
**GO DOCTOR RED (SOFT)**  
A fully integrated squeegee system where all of the components have been designed together, to work together. The I-beam handle fits comfortably in your hand. The I-beam handle is wrapped with a comfortable, non-slip material that provides secure grip. Go Doctor incorporates a quick-change blade system for speedy on the job replacements.

**50184837**  
**GO DOCTOR BLUE BLADE (HARD)**  
Use for window film and auto wrap installs.  
**50184917**  
**GO DOCTOR RED BLADE (SOFT)**  
Use for window film, auto wraps, vinyl graphics and paint protection installs.

# HANDLED SQUEEGEES / 1/4" BLADES



**50149305**  
**SUPER CLEAR MAX SQUEEGEE BLADE**  
**50212761**  
**ANGLED SUPER CLEAR MAX SQUEEGEE BLADE**  
Softer version of the Blue Max Squeegee. This blade is more flexible making it a better choice for rear window installations.

**50184813**  
**8" ORANGE CRUSH**  
**50205793**  
**5" CROPPED ORANGE CRUSH**  
**50184785**  
**5" ORANGE CRUSH**  
These blades help expel water while keeping their strength. The Orange Crush conforms to curved glass. Blades fit into a handled grip or can be used alone.

**50209489**  
**5" HYBRID SQUEEGEE**  
On one side the Hybrid is an Orange 85 durometer squeegee blade and on the other side a harder Blue 95 durometer. This dual blade features double beveled working edges. Simply flip the blade in your Fusion Handle to use one side or another.



**50209275**  
**5" PINK CLEAN**  
Pink Clean is a 5" Cropped squeegee blade. The softest blade from Fusion Tint Tools. This blade is specifically designed with cleaning in mind. It is recommended to use the Pink Clean squeegee blade to easily remove liquids with minimal pressure applied by the user.

**50209488**  
**5" YELLOW FLAT OUT BLADE**  
**50212614**  
**8" YELLOW FLAT OUT BLADE**  
The Yellow Flat Squeegees are available in both 5" and 8" length. Slightly harder than the Orange Crush and comparable in hardness to the Blue Max products they work great in flat glass and security applications. For best results try in a Fusion Handle, Fusion Stretch series or Thor's Hammer.

**50213346**  
**5" RED LINE EXTRACTOR 1/4" THICK DOUBLE BEVELED**  
**50213349**  
**8" RED LINE EXTRACTOR 1/4" THICK DOUBLE BEVEL**  
**50213404**  
**5" RED LINE EXTRACTOR 1/4" THICK SINGLE BEVELED CROPPED SQUEEGEE BLADE**  
The Fusion 5" Red Line Extractor Squeegee Blade is 1/4" thick with a durometer of 95. These extractor blades provide great liquid removal with every pass. Use with any of the standard 5" Fusion Handles.



# S&S HANDLED SQUEEGEES



**50149365**  
**SQUARE BLUE MAX-NARROW**  
Replacement blade for Thor's Hammer (50149586).



**50149276**  
**8" PRO SQUEEGEE BLADE**  
**50149274**  
**6" PRO SQUEEGEE BLADE**  
Replacement blade to Pro Squeegee (50149300 or 50148564) used as a means of removing application solutions from beneath the film during the installation of all flat glass film types. Square edge.



**50148564**  
**6" PRO SQUEEGEE DELUXE**  
**50149300**  
**8" PRO SQUEEGEE DELUXE**  
An installation squeegee as a ready-to-use assembly. Used to remove application solution during the installation of all flat glass film types.



**50209485**  
**5" FUSION STRETCH HANDLE**  
**50209276**  
**8" FUSION STRETCH HANDLE**  
The Fusion Stretch handle is the latest design for installing flat glass and security films. These handles come in both 5" & 8" widths. This handle features a 14 1/2" metal extension and two rubber grip sections for maximum water removal.



**50213346**  
**5" RED LINE EXTRACTOR 1/4" THICK DOUBLE BEVELED**

**50213349**  
**8" RED LINE EXTRACTOR 1/4" THICK DOUBLE BEVEL**

**50213404**  
**5" RED LINE EXTRACTOR 1/4" THICK SINGLE BEVELED CROPPED SQUEEGEE BLADE**  
The Fusion 5" Red Line Extractor Squeegee Blade is 1/4" thick with a durometer of 95. These extractor blades provide great liquid removal with every pass. Use with any of the standard 5" Fusion Handles.



**50213348**  
**5" RED LINE EXTRACTOR 1/4" THICK NO BEVEL SQUEEGEE BLADE**

**50213350**  
**8" RED LINE EXTRACTOR 1/4" THICK NO BEVEL SQUEEGEE BLADE**  
The Fusion 8" Red Line Extractor Squeegee Blade is 1/4" thick with a durometer of 95. These extractor blades provide great liquid removal with every pass. This no bevel squeegee gives you four working edges! Use with any of the standard 8" Fusion Handles.



# S&S HANDLED 3/8" SQUEEGEES



**50213402**  
**5" FUSION BIG MOUTH STRETCH HANDLE**  
**50213345**  
**8" FUSION BIG MOUTH STRETCH HANDLE**

If you want to get optimum use of your Big Mouth Blade, use with the Fusion Big Mouth Stretch Handle. The 14 1/2" extended handle is texturized with dual grips for maximized leverage. One of the biggest issues installers encounter when installing thick mil films is extended dry time. This is mainly due to not being able to extract a majority of the solution because their current tools flex too much or they don't have enough strength to push as hard as they need to. The Big Mouth handles and 3/8" Blades are the solution to that problem by taking more of the force required to adequately finish the job off of the installer and onto the tool.



**50213344**  
**8" FUSION BIG MOUTH HANDLE**  
**50213403**  
**5" FUSION BIG MOUTH HANDLE**

The Fusion Big Mouth Handle features brass inlaid screw threads and stainless steel screws. This handle is designed to hold a 3/8" thick squeegee. One of the biggest issues installers encounter when installing thick mil films is extended dry time. This is mainly due to not being able to extract a majority of the solution because their current tools flex too much or they don't have enough strength to push as hard as they need to. The Big Mouth handles and 3/8" Blades are the solution to that problem by taking more of the force required to adequately finish the job off of the installer and onto the tool.



**50213431**  
**5" BIG MOUTH 3/8" THICK NO BEVEL SQUEEGEE BLADE**

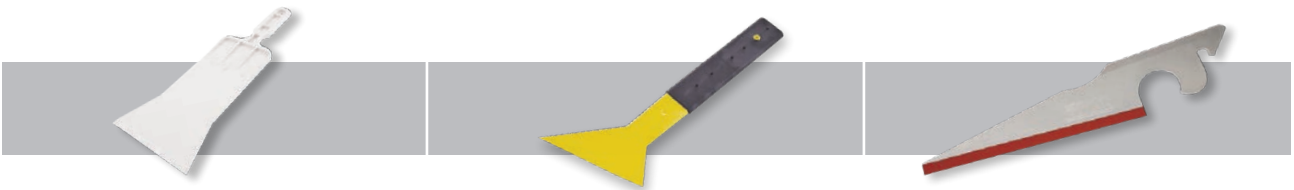
The 3/8" thick blades are ideal for thick security films, graffiti films, hurricane/ bomb blast films, and windshield protection films. It is a much stiffer option designed to optimize solution extraction while not putting more pressure on the back and arms of the installer. Use with a Big Mouth Handle.



**50213432**  
**8" BIG MOUTH 3/8" THICK NO BEVEL SQUEEGEE BLADE**

The 3/8" thick blades are ideal for thick security films, graffiti films, hurricane/ bomb blast films, and windshield protection films. It is a much stiffer option designed to optimize solution extraction while not putting more pressure on the back and arms of the installer. Use with a Big Mouth Handle.

# REAR WINDOW / REACH TOOLS



**50156648**  
**THE BULLDOZER I - AUTOMOTIVE**  
Allows you to get to those hard to reach areas, such as behind speakers, brake lights, low angles and rear windows. Features a 6" squeegee blade and is 15" in overall length.

**50149319**  
**SLIM FOOT**  
Modeled after the Big Foot Squeegee, the Slim Foot has a slender design that can reach into tighter openings. This no rib squeegee helps reach behind brake lights and has a rubber grip for secure handling. Measures 15" from blade tip to handle end.

**50157835**  
**TITAN SQUEEGEE-RED**  
The Titan is made with the same plastic used to make bullet proof glass. This allows more strength and rigidity. The overall length is 14 3/4" which allows for a longer reach for rear windows and its unique design will easily lift inner and upper door seals.



**50201166**  
**THE REACH TOOL**  
This tool is designed to effectively squeegee water from the most difficult places to reach. The REACH is 16 3/4 inches in length and built with a double rubber blade on each side. One side of the tool provides an excellent grip, while the other side uses both edges to squeegee water out; one pushes the water and the other drags the water. This tool is completely adaptable with two different radiuses of curvature at each side; one side is stiffer than the other.

**50156650**  
**SIDE SWIPER HANDLE ONLY**  
**50184927**  
**SIDE SWIPER HANDLE WITH BLADE**  
A great tool for the lower edge of rear windows and behind brake lights. Use with 6" blue squeegee blade. Squeegee blade sold separately.

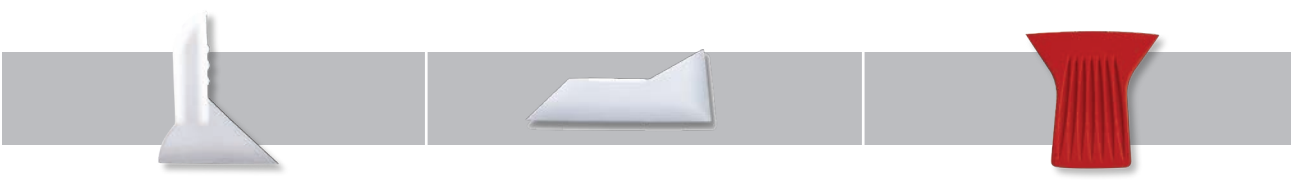
**50157007**  
**STROKE DOCTOR**  
Designed with an I-beam construction handle that features an ergonomic slip-resistant grip and longer blade to apply squeegee pressure more evenly in the most hard to reach places.



**50201164**  
**STROKE DOCTOR REPLACEMENT BLADE**  
Replacement blade for 50157007.

**50220795**  
**SHORT-CUT 6"**  
Short-Cut is a revolutionary tool designed for reaching deep in to the window edge past the dot matrix. Extraordinary rigidity, excellent grip, but still nice and compact.

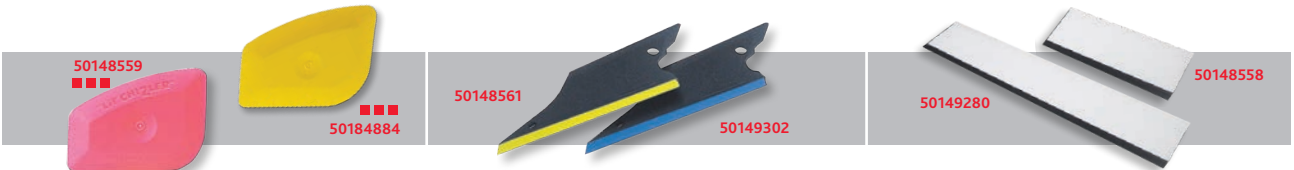
# SQUEEGEE ESSENTIALS



**50148560**  
**SLAMMER**  
Used for cleaning corners and along gaskets, wicking water out along borders and easily reaches rear windows.

**50184926**  
**SHUTTLE**  
A hard card with the ability to reach into tight areas located at the bottom edge of rear window glass.

**50157256**  
**GATOR BLADE I**  
The Gator Blade I product is an alternative to the Lil Chizler. It has a unique shape to give you a better grip making it easier to apply pressure.



**50148559**  
**LIL CHIZLER**  
**50184884**  
**DURA CHISEL**  
Ideal for removing decals, film or adhesive from sensitive surfaces. Use for pressing down small film creases or air bubbles.

**50148561**  
**THE CONQUERER SQUEEGEE**  
**50149302**  
**THE BLUE CONQUERER SQUEEGEE**  
The Conquerer is the original corner reach tool. Features a soft squeegee blade along one edge and pointed hard card tips on the ends making it a versatile staple to any tool kit. Use the Blue version for a harder blade.

**50149280**  
**12" BLOCK SQUEEGEE**  
**50148558**  
**6" BLOCK SQUEEGEE**  
Combination squeegee/hard card used for finishing during film installations. Can be cut to various angles to reach tight, sharp corners.



**50157259**  
**TAIL FIN GREEN (SOFT)**  
Great for getting behind brake lights and back window applications. Finger holes make holding onto the Tail Fin easy.

**50192328**  
**BLUE QUICK FOOT (SOFT)**  
**50149364**  
**YELLOW QUICK FOOT (HARD)**  
A stiff squeegee with a handle for jobs that require medium reach. Slim and trim with an unwrapped handle.

**50149315**  
**Green (Soft)**  
Gives you curves where you need them. Designed to match all those concave surfaces installers see every day. A great fit for window film, paint protection or vinyl installs. The Contour hugs surfaces evenly while spreading radial pressure outward for quick film adhesion. The elongated triangular shape gets into all those hard-to-reach areas.



**50149313**  
**YELLOW CONTOUR (FLEX-FIRM)**  
**50184850**  
**PLATINUM CONTOUR (HARD)**  
**50205769**  
**PEACH CONTOUR (FLEX-FIRM)**  
Gives you curves where you need them. Designed to match all those concave surfaces installers see every day. A great fit for window film, paint protection or vinyl installs. The Contour hugs surfaces evenly while spreading radial pressure outward for quick film adhesion. The elongated triangular shape gets in to all those hard to reach areas.

**50201452**  
**EZ WING LIME (FLEX-FIRM)**  
**50205767**  
**EZ WING PEACH (FLEX-SOFT)**  
The first difference in the EZ Wing from a product like the EZ Reach or EZ Reach Ultra is the unique chizzler tip that enables you to flip it over to chisel out those stubborn creases and or dust spots. The second feature of the new EZ Wing is the increased stiffness across the nose of the tool. This will allow you to apply more pressure out at the tip in those situations where you are reaching into a tight spot. Lastly the CCT technology provides a curved main edge.

**50149325**  
**LITTLE FOOT RED (FLEX-FIRM)**  
**50184886**  
**LITTLE FOOT BLUE (SOFT)**  
The Little foot features the unique blade shape of the Big Foot without the handle. Fits comfortably in your hand and features an angled, long-reach tip that gets behind gaskets and rubber seals easily. This squeegee measures about 6" (15 cm) along the usable edge. The pointed edge of this tool allows the installer to squeegee in very tight areas. Has plenty of room to keep a good grip on the squeegee.

SQUEEGEE ESSENTIALS CONT'D



**50149314**  
**EZ REACH ULTRA GOLD (FLEX-FIRM)**  
**50149363**  
**EZ REACH ULTRA PLATINUM (HARD)**  
If you like the Original EZ Reach, you are going to love Ultra! It is exactly the same except the hole has been removed to make it stronger and the top has been trimmed down to give installers yet another handy angle to work with. Designed specifically to get at the corners of quarter glass windows, you will also reach for it again and again to put down those little corners of film in hard to access areas.

**50157812**  
**ORIGINAL EZ REACH GOLD (FLEX-FIRM)**  
**50157814**  
**ORIGINAL EZ REACH PLATINUM (HARD)**  
Stop cutting down hard card squeegees and use this versatile tool instead. These triangular cards with flat edges are perfect for putting down those little corners of film in hard to access areas. The gold version is flex-firm while the platinum offers a hard card texture with internal lubrication technology to help prevent scratching. EZ Reach is the ultimate corner tool.



**50157414**  
**PLATINUM SMART CARDZ**  
The modern version of the hard card squeegee, only better! 25% wider than a hard card, with a tapered tip, comfortable grip and thin squeegee edge make it the smartest tool in your apron. Great for sliding under gaskets and seals. Use Smart Cardz anywhere you would use hard card squeegees.

**50164759**  
**TRI-EDGE PLUS**  
Tri-Edge is the new standard in the industry. Tri-Edge Plus features a rubber squeegee edge.

**TOOL TIP**  
The Tri-Edge Plus utilizes a rubberized heat-resistant material on one edge to serve as a water squeegee.



**50201222**  
**TRI-EDGE X PINK**  
**50201409**  
**TRI-EDGE X BLUE**  
**50201410**  
**TRI-EDGE X YELLOW**  
**50201451**  
**TRI-EDGE X ORANGE**  
Tri-Edge is now premiering the Tri-Edge X. The angles have been recalculated and extended into a bigger tool. All the durability and quality of the Tri-Edge tool is now made to make those deep gaskets and hard to reach spots more accessible.

**50201167**  
**TRI-EDGE BLUE**  
**50201221**  
**TRI-EDGE YELLOW**  
**50201168**  
**TRI-EDGE ORANGE**  
Tri-Edge is the new standard in the industry. (Hardness is in order of softest to hardest: Blue, Yellow, Orange)

**50148582**  
**YELLOW DIAMOND TIP (SOFT)**  
Designed to meet the challenge of hard to reach areas, with square edges and 20° angled corners on both sides. The raised area in the center gives you a secure, slip-resistant grip, even when wet. The softer version makes a great squeegee because of the firm texture delivering pressure to the point-of-contact while the special material helps prevent scratching. Ideal for bumping edges and heat shrinking because of the high heat-resistant material.



PPF/WRAPS/VINYL & GRAPHICS



**550203980**  
**PPF HORNET 4" PADDLE SQUEEGEE**  
The Fusion PPF Hornet is the latest in Paint Protection Film installation tools. This triple durometer paddle squeegee offers the handler two durometers to install with. The black install side measures in at a firm but flexible 80 durometer and the yellow side at a softer more pliable 70 durometer. The red "spine" between the two layers acts as a rigid support core for the soft squeegee blades on both sides. Switching between the two install surfaces is as easy as flipping the tool in-hand to the desired working edge. The Fusion PPF Hornet is specifically engineered to be safe for installing paint protection films.

**50149368**  
**3M WET OR DRY SQUEEGEE**  
Soft rubber card style squeegee. Recommended for paint protection installations.

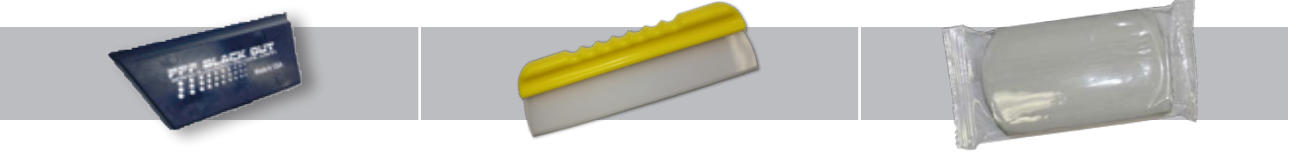
**50246274**  
**4" YELLOW TOOLS PPF SANDWICH**  
This squeegee, which is unusually thin for PPF or tinted film applications, is nevertheless stable enough to exert optimum pressure on the squeegee edge. For large areas it guarantees fatigue-free work. Thanks to its pointed edge ergonomics, it enables optimal working out of the adhesive up to the edges. Even side windows (tinted films) can be squeegeed down to the smallest corner.



**50246444**  
**ROUNDED FRONT EDGE PINK PPF SQUEEGEE**  
Ultra High Quality Pink PPF squeegee with machined, rounded end. Works for PPF and Vinyl Wrap applications

**50246446**  
**2.5" X 3" PINK PPF SQUEEGEE**  
Medium Pink PPF Squeegee for PPF and Vinyl Wrap installations. This squeegee is 2.5x3" with high quality beveled edge.

**50246443**  
**3" X 4" PINK PPF SQUEEGEE**  
Large Pink PPF Squeegee for PPF and Vinyl Wrap installations. This squeegee is 4x3" with high quality beveled edge.



**50246314**  
**FUSION BLACKOUT CROPPED BLADE**  
The Fusion 5" PPF Black Out Blade Cropped has been designed to be used for PPF Install but has also become a favorite for standard squeegeeing of surfaces because of the blades soft flexibility and high level of infused slip agents.

**50183183**  
**YELLOW ONE PASS SQUEEGEE**  
Flexible handle & silicone squeegee used for removing water from a vehicle surface.

**50170137**  
**CLAY BAR**  
Clay Bar is an engineered resin mixture that auto detailers use to remove contaminants and pollutants from the surface of your car's paint, glass, fiberglass, and metal.

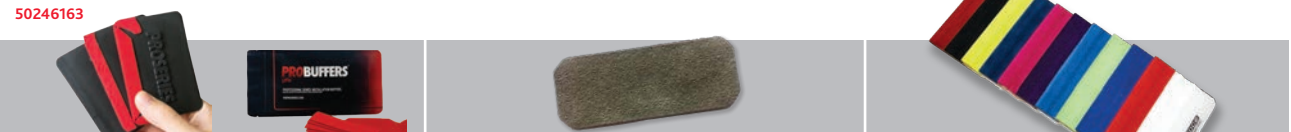
PPF/WRAPPS/VINYL & GRAPHICS CONT'D



**50190456**  
**4" BUMP CARD WITH FELT EDGE**  
Four inch hard card with two ridges or "bumps". One edge is wrapped in felt.

**50157277**  
**MACTAC FELT SQUEEGEE**  
Recommended for paint protection or vinyl graphic installations. The soft felt is designed to avoid scratching.

**50205780**  
**4" LEMON SUEDE BLADE (Flex-Firm)**  
Evolved from the success of the Speed Wing family the new Suede Blade has quickly answered a lot of challenges for installers. The Suede Blade comes with a dual layer fabric that gives installers a cushioned, smooth fabric over the edge of the squeegee. The Suede Blade glides over window tint, paint protection film and vinyl graphics/wraps with ease.



**50246163**  
**PROSQUEEGEE**  
Application squeegee

**50205723**  
**SUEDE BLADE STRIP**  
4" Suede replacement strip. These are die cut to fit the 4" Speed Wing.

**50200392**  
**WET EDGE SQUEEGEE**  
Wrap your vehicles faster and better. The only squeegee applicator made to use wet. No scratches, no marks, just smooth motions that easily glides across vinyl films and painted surfaces without worry of mistakes or damage. The Wet Edge Squeegee is a Teflon squeegee with a unique microfiber bonded to it. Can be used either wet or dry. This is the top of the line applicator in the business. Colors will vary.



**50205771**  
**WRAP GLOVE**  
**50205772**  
**WRAP GLOVE XL**  
The new Wrap Glove is sold in pairs and is a must have for anyone installing vinyl graphics and vehicle wraps. Installing with your bare hands can cause over stretching and puckering of the vinyl as well as potential damage from the transfer of oils on your skin. These lint free and durable Wrap Gloves reduce friction while handling the material giving you great results every time.

**50246161**  
**PROGLOVE HD**  
Application glove

**50250973**  
**PROSLEEVE**  
Protects against contaminants underneath the wrap, as well as protects your arm from scratches and cuts behind door panels, under dashes, etc.

**50220794**  
**GHOST GLOVE**  
The Ghost Glove is extremely slick so defining edges with hands is immediate with no drag. This glove is lint and static free and prevents oil transfer and fingerprints. Ghost Glove is rated as A2 (extremely) cut resistant. One size fits most. Ghost glove is sold as ONE glove not a pair.

PPF/WRAPPS/VINYL & GRAPHICS CONT'D



**PROMAT**  
**50250974 Black**  
**50250909 White**  
**50251134 Red**  
½" Dense foam anti-fatigue mat for installer comfort, 17" x 60.5", available in white, red, or black.

**50246792**  
**3M PRECISION LINE CUTTING TAPE**  
Wire filament cutting tape allows for knifeless clean edge cutting

**50205791**  
**XTREME MAGNET (SINGLE UNIT)**  
This handy body magnet makes applying vinyl and vehicle wraps faster and easier by acting as another hand to hold the material. You can also use this in the place of masking tape or pre-mask to position the material on the vehicle.



**50251038**  
**PROBELT**  
Nylon Velcro belt with built in magnetic slidable holds to affix to installation tool pouch, which can also be used independently of belt. Fits waist sizes 32" – 48"

**50246165**  
**PROFORM**  
Stretch dispersion application tool used for wrapping mirrors.

**50246050**  
**SOLARY HANDHELD IR LAMP**  
Handheld IR lamp for heating and post heating. 110v



**50246164**  
**PROFINISHER**  
Application tools for tucking edges.

**50201090**  
**SUNNY TUCKER**  
This wrap tool provides multi- functionality use by allowing the installer to reach edges and body lines like never before. This tool is a must have if you apply any graphics to challenging surfaces.

**50251110**  
**PROSTICK WRAP POLE**  
Aluminum Wrap Pole designed to evenly stretch large panels and simplify installation on bumpers.



**50252180**  
**J STURGES PARKING SENSOR CUTTER**  
This precision tool will, with little familiarization and practice, allow you to cut parking sensor holes in paint protection film, after the film is fitted to the vehicle, in sizes from 18mm to 32mm diameter.

**50255161**  
**J.STURGES PARKING SENSOR CUTTER REPLACEMENT BLADES**

**50255161**  
**PARKING SENSOR CUTTER REPLACEMENT SUCTION CUPS**  
**50255005**  
**PARKING SENSOR CUTTER MAINT SET**  
Includes new suction cups x 2  
Replacement blades x 2  
Replacement blade Caps x 2

# HARD CARDS



- 50149321**  
BLUE HARD CARD
- 50149320**  
BLACK HARD CARD
- 50148580**  
WHITE HARD CARD
- 50149309**  
PINK HARD CARD
- 50148581**  
GOLD HARD CARD
- 50149322**  
PLATINUM HARD CARD
- 50205768**  
PEACH HARD CARD



- 50148557**  
YELLOW LIDCO SQUEEGEE
- 50156977**  
GRAY LIDCO SQUEEGEE
- 50149291**  
UNIVERSAL SQUEEGEE
- 50149289**  
4" 3M GOLD SQUEEGEE
- 50149290**  
4" 3M BLUE SQUEEGEE



- 50149311**  
6" WHITE HARD CARD SQUEEGEE
- 50183184**  
6" LIDCO WHITE HARD CARD
- 50149308**  
HARD CARD SHARPENER  
A must have to keep hard card and other squeegee edges smooth.  
Uses 9mm replacement blades.

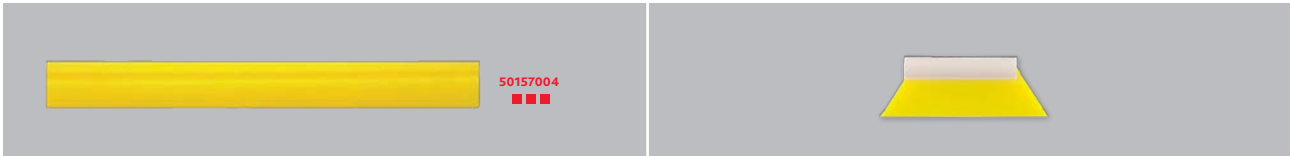


- 50184932**  
12YD. SLIP TAPE
- 50165448**  
4YD. SLIP TAPE

Slip tape is the ultimate product for making your application squeegees smoothly and safely glide across window film, paint protection, car wrap and vinyl graphic applications. Avoid tearing or scratching the material you are working with. Include this product in your tool box!



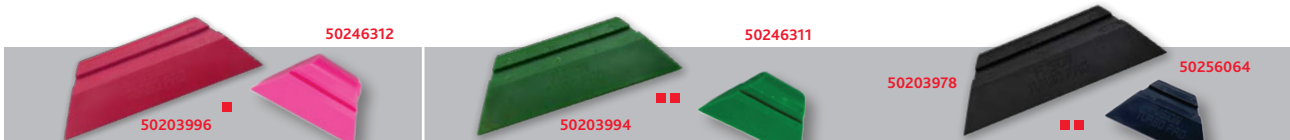
# TUBE SQUEEGEES



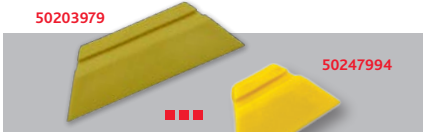
- 50157004**  
18 1/2" SOFT DK. YELLOW TURBO SQUEEGEE BLADE  
A soft installation squeegee used to remove application solution during installation of all auto and paint protection films.
- 50212736**  
5 1/2" SOFT YELLOW TURBO W/HANDLE  
A soft installation squeegee used to remove application solution during installation of all auto and paint protection films.



- 50149286**  
28" BLACK SMOOTHIE BLADE ONLY  
Soft black squeegee used for glass cleaning.

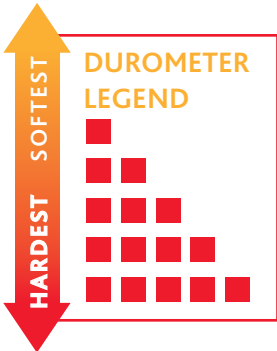


- 50246312**  
FUSION PINK PRO 3 1/2"
- 50203996**  
FUSION PINK TURBO PRO 5 1/2"  
77 durometer. Super soft, recommended for paint protection films and cleaning.
- 50246311**  
FUSION GREEN PRO 3 1/2"
- 50203994**  
FUSION GREEN TURBO PRO 5 1/2"  
80 durometer. Recommended for paint protection films and films with a softer hard coat.
- 50256064**  
FUSION BLACK PRO 3 1/2"
- 50203978**  
FUSION BLACK TURBO PRO 5 1/2"  
82 durometer. Recommended for paint protection films and films with a softer hard coat.



- 50247994**  
FUSION YELLOW PRO 3 1/2"
- 50203979**  
FUSION YELLOW TURBO PRO 5 1/2"  
85 durometer. Recommended for vinyl applications and areas that require more pressure.

**TOOL TIP**  
Use Slip Tape on the edge of your turbo blade to make it slide even smoother across paint protection film or vinyl.



# INSTALLATION ACCESSORIES



**50184842**  
**AUTOMOTIVE GLASS EDGE TRIMMER**  
Use along the top edge of roll down windows for a precise "micro-edge" finish (1/8"). Use 50149186 as a replacement blade.

**50149206**  
**CERAMIC SAFETY FILM CUTTER**  
Designed to deliver rapid, precise cuts for thick gauge safety films. It is intended for precision pre-cutting on flat, square-edged tables.

**50149299**  
**RED DEVIL SQUEEGEE**  
Flexible squeegee that is great for tight corners and maneuvering around gaskets.

**TOOL TIP**  
Tinting automotive windows is progressively more challenging. View the different tools to assist you in "tucking" the film under the door panel.



**50149225**  
**HOOK TOOL**  
Use this tool to pull back on rubber gaskets to tuck film below the seal.

**50149181**  
**OLFA DC4 BLADE DISPOSAL**  
Blade disposal unit that can be emptied and reused.

**50184754**  
**KEVLAR HEAT GLOVES (PAIR)**  
Heat-resistant gloves great for use during heat shrinking.



**50149306**  
**GASKET PUSH STICK**  
Used for pressing out minor creases or crimps and retrieving tucked gaskets.

**50207062**  
**ERGODYNE WAIST APRON**  
Heavy duty 13 pocket tool apron. Clip closure for secure, comfortable fit.

**50149344**  
**WAIST APRON**  
Heavy duty waist apron go easy access to tools while on the job.



**50200348**  
**MOLDING & TRIM REMOVAL TOOLS**  
The kit includes five distinctive tools for the easy removal of body fasteners, interior trim pieces, exterior body moldings, wheel hub caps, etc. Made from heavy-duty plastic to prevent scratching and damage to vehicle surfaces.

**50204156**  
**SOAK SHIELD ROPE- XL**  
The window tinting industry's original braided water absorbent rope. Soak Shield is tucked between the glass and the deck to reduce the chances of water damage to electronic parts during film installation.

**TOOL TIP**  
You don't want to leave behind discarded blades on a job site for a potential injury later. Safely snap blades into a disposal unit.

# INSTALLATION ACCESSORIES CONT'D



**50149222**  
**WAGNER HT1000 HEAT GUN**  
Standard heat gun with high, medium, low settings. (120 volt)

**50149221**  
**WAGNER HT3500 DIGITAL HEAT GUN**  
This model allows you to heat shrink in low or high fan speeds and has a variable temperature setting to fine tune the amount of heat needed for a specific application. (120 volt)



**50212368**  
**FUSIONS AFTERBURN TAPE**  
This amazing product is self-adhering, meaning it bonds to itself with no adhesive. When it's removed, there is no leftover glue residue. Apply it to anything and everything! Torch tips, heat guns, tools, steamers, and more! The list is endless! This tape stretches up to 300% and molds perfectly to odd shaped items. High heat resistance up to 500 degrees Fahrenheit (about 260 degrees Celsius) with only one layer applied. Double or triple your layers to increase your level of heat resistance and protection!



**TOOL TIP**  
Jiffy Steamer will help prevent damaging defroster lines when removing film from rear windows. Besides making life easier, a Steamer will pay for itself in just a few jobs when you consider the considerable time savings.

**50149227**  
**JIFFY STEAMER J2W FILM REMOVER**  
Impact resistant, with a 1300 watt heating element and heats up in two minutes with 2 hours of steaming per filling. Great for removing film and adhesive from vehicle rear windows. (120 volt; alternate voltage available upon request).



**50175906**  
**6ft GLASS PEEL BOARD**  
Peel Board / Mobile peel board designed for use in automotive film installation environment. UPS/FedEx shippable and assembly required.

**50254755**  
**10FT GLASS PEEL BOARD GLASS STATION**  
The ultimate professional-grade equipment. This innovative setup doubles as a high-quality peel board, offering unmatched durability and precision for both window film and paint protection film (PPF) applications. Featuring stainless steel components and available in multiple sizes, the Glass Station is designed to enhance mobility and efficiency in every installation.

46" x 79.5" x 1/4" tempered glass size needed (not included).

Glass size MUST BE 120" wide and 62" in height (not included).

MEASURE/MARK & TRIM



**50184791**  
**GRAY 5-WAY TRIM GUIDE**  
Use this tool as a trim guide or wrap in paper towels and use as a bump tool.



**50149180**  
**1/2" BLACK OUT TAPE**  
Black matte vinyl used to hide light gaps along edges of film installations. (150' per roll)



**50165749**  
**DO NOT ROLL DOWN STICKER**  
Perfect as a reminder on new auto installs. Features low-tack adhesive. (1000 per roll)

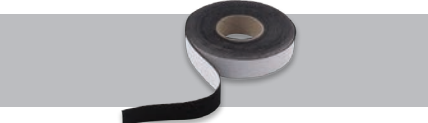
**50196100**  
**DO NOT ROLL DOWN TAPE**  
Approximately 200 stickers per roll.

TOOL TIP

In addition to a trim guide, the 5- Way Tools are also an effective squeegee, especially when wrapped with a low lint paper towel or cloth to absorb moisture along the border of the film.



**50149214**  
**YELLOW FILM MARKER**  
Handy for 3 basic purposes:  
Marking film prior to installation of windows with unusual shapes (arches, trapezoids, etc.) which must be cut to approximate shape before the final "lay-up".  
Circling a contaminant (hair or fiber) before pulling back the film to remove it.  
Marking film edges to check for glass movement on side roll-ups during the trimming process. Yellow grease mark easily wipes away.



**50149211**  
**1 1/2" BLACK ACRYLIC FELT**  
Helps reduce scratching of automotive films on some vehicle roll down windows. (50' per roll)



**50149347**  
**12" TRIANGLE**  
45/90° with circle templates.

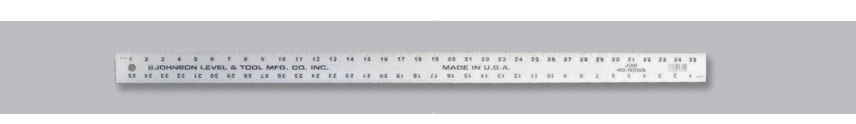
**50184808**  
**8" TRIANGLE**  
30/60° with circle templates.

TOOL TIP

Application of felt tape has become a popular solution to the familiar "scratching" problem on some vehicle roll down windows.



**50149216**  
**FILM OPAQUER PEN - THIN POINT**  
**50149215**  
**FILM OPAQUER PEN - BROAD POINT**  
Used by installers to hide fine line mistakes in trimming which causes light intrusion at the film edge.



**50149335**  
**36" STRAIGHT RULER**  
Imperial measurements including 1/8ths & 1/16ths.

SPRAYER & ACCESSORIES



**50149245**  
**POLYSPRAY 2**  
This pressurized spray bottle holds more solution than the 32 oz. bottles and reduces "finger-fatigue" eliminating the need for pumping while spraying via a simple trigger. Handy for large windows and long duration sprays. Has an adjustable spray nozzle. (1.25 liters)

**50149177**  
**IMPACT JR. PUMP-UP SPRAYER**  
Pressurized spray bottle that holds 48 ounces and reduces "finger-fatigue" eliminating the need for pumping while spraying via a simple trigger. Has adjustable spray nozzle.



**50214378**  
**SPRAY BOTTLE**  
Easy-to-use as a compression/pump-up sprayer. The 360° feature allows continual spray at angles, sideways or even upside down which uses up all the product in the container. Viton® seals are resistant to most common chemicals and detergents. Pressure release safety valve and moveable nozzle for various spray patterns and angles.



**50184890**  
**MERCURY PRO+ BOTTLE & TRIGGER**  
The next generation in spray bottles, the Mercury PRO+ features viton seals and a double action pump that sprays both when you pull back and when you release the trigger giving you more liquid with each pull. This lightweight ergonomic trigger/bottle combo holds up to 1 liter (33 ounces) of fluid.



**50214375**  
**MERCURY CHEMICAL RESIST 360**  
**SPRAY BOTTLE 0.5 LITER**

**50214374**  
**MERCURY CHEMICAL RESIST 360**  
**SPRAY BOTTLE 1 LITER**  
Unique, Double-Action Trigger for a constant fine spray causing less hand fatigue. The Blue Mercury Pro Sprayer (1 liter) sprays twice for each squeeze of the trigger, therefore you get twice as much fluid where you need it with each squeeze



**50214377**  
**MERCURY 360 SPRAY BOTTLE 0.5 LITER**

**50214376**  
**MERCURY 360 SPRAY BOTTLE 1 LITER**  
Unique, Double-Action Trigger for a constant fine spray causing less hand fatigue. The Blue Mercury Pro Sprayer (1 liter) sprays twice for each squeeze of the trigger, therefore you get twice as much fluid where you need it with each squeeze.



**50149209**  
**32OZ. BOTTLE**  
Empty 32 ounce bottle only.

**50148555**  
**MAXI TRIGGER SPRAYER**  
An industry staple. Ergonomic trigger with high output and durability.



**50184790**  
**5 GALLON STAINLESS STEEL SPRAYER**  
Deluxe pressure sprayer holds up to 5 gallons of mounting solution in a stainless steel tank. Hose can reach up to 25' in length. Fill with solution and pressurize with air from any compressor. Curly, flexible hose reaches into cars or stretches to go up a ladder with you.



**50157381**  
**REPLACEMENT SPRAY GUN FOR 5 GALLON SPRAYER**  
Replacement nozzle for 5 gallon stainless steel sprayer.

**50157054**  
**25' REPLACEMENT HOSE AND SPRAY GUN FOR 5 GALLON SPRAYER**  
Replacement hose and nozzle assembly for 5 gallon stainless steel sprayer.



**50157005**  
**GILMORE NOZZLE**  
Use with flex line hose. (Does not fit on 50157054 hose)

SPRAYER & ACCESSORIES CONT'D



**50251682**  
**TRU SPRAY RIPTIDE 5 GALLON KEG AIRLESS SPRAY SYSTEM**  
5 gallon TRU Spray Systems GEN 1.3 ready to go to work straight out of the box for your Window Tinting, Auto Window Tinting, PPF Paint Protection Film, Residential Window Tinting, Commercial Window Tinting and Auto Detailing Installation needs 90 psi

**50251564**  
**TRU SPRAY HYDRA 2.5 GALLON KEG AIRLESS SPRAY SYSTEM**  
2.5 gallon TRU Spray Systems GEN 1.3 ready to go to work straight out of the box for your Window Tinting, Auto Window Tinting, PPF Paint Protection Film, Residential Window Tinting, Commercial Window Tinting and Auto Detailing Installation needs 90 psi

**50251625**  
**TRU SPRAY OASIS AIRLESS SPRAY SYSTEM**  
Attach this Airless Electronic Spray System to an Existing Tank to convert your old pressurized keg to a revolutionary Airless system. 90 psi  
**KEG NOT INCLUDED**



**50251683**  
**TRU ACTIVE AIRLESS SPRAY PACK AND BACKPACK**  
The TRU-ACTIV is the newest edition of Airless Electronic Spraying capabilities. You can now "Wear" your TRU Spray Systems in a mobile sprayer pack on your back. Gives you the freedom to take your installations of Window Tinting, PPF, Vinyl Wrapping and Detailing to the next level of efficiency and productivity 90 PSI / 4 liter capacity .

CLEANING/PREP & CHEMICALS



**50192339**  
**COPPER MESH PAD**  
The Copper Mesh Pad is for dot matrix prep ONLY! It will ABSOLUTELY scratch glass.

**50149351**  
**WHITE SCRUB PAD**  
Great for cleaning windows prior to installation and prepping dot matrix areas.

**50168826**  
**VIRTUALLY "LINT FREE"**  
Reusable wipes. 300' of cloth per box.

**TOOL TIP**  
Low lint towels or wipes are a necessity for quality window film installations. Absorbent wipes are ideal for cleaning windows and covering hard cards for bumping or wicking around the film edge.



**50156904**  
**THE SCRUBBER**  
Used to reach behind speakers and brake lights. Scrub away adhesive along the bottom edges of sloped rear windows. Uses replaceable standard White Scrub Pads (50149351) cut 2" x 3". This tool is 3" by 15" long.



**50157394**  
**SUPER STRIPPER ADHESIVE REMOVER- GALLON**  
A highly concentrated, ready-to-use adhesive remover.

**TOOL TIP**  
When mixing mounting solutions, it is recommended that you use filtered water for best results.



**50149352**  
**X-100 APPLICATION SOLUTION- GALLON**  
Cleaning and application concentrate for most dry adhesives. The mild acid formulation makes this a great cleaning agent for glass contaminated with oil, grease or dirt. Recommended mixture is 1 ounce per 1 quart of water. Not to be used with copper or silver based films.



**50149218**  
**FILM-ON CONCENTRATE**  
1 quart concentrate mounting solution. Use for pressure sensitive adhesives and sputtered copper films.

**50157412**  
**FILM-ON DISPENSER**



**50149208**  
**DIRT-OFF CONCENTRATE**  
1 quart concentrate cleaning solution. Use for interior automotive window cleaning. Great for removing oily deposits on automotive glass. Dirt-Off can also be used as an adhesive accelerant to give additional tack for dot matrix areas.

**50157438**  
**DIRT-OFF DISPENSER**

**TOOL TIP**  
Always error on the side of caution when using chemicals. Be sure to protect your skin as well as any surfaces the product may come in contact with.

**TOOL TIP**  
There are many ways to clean and prepare automotive glass, no matter what the circumstance always test the product of your choice in an inconspicuous area to prevent potential damage.

# CLEANING/PREP & CHEMICALS CONT'D



**50184946**  
**TINT SLIME-GALLON**

Tint Slime is a window tint mounting & cleaning solution. Tint Slime can be used to install automotive window tint, paint protection film, flat glass film, and vinyl. Tint Slime is free of particulates and won't separate. Tint Slime is safe for use on interiors, biodegradable, and of course, tint safe. Concentrate; mix 1 ounce per 1 gallon of water.

50212500



50247756



**50212500**  
**RAPID REMOVER QUART**

**50247756**  
**RAPID REMOVER GALLON**

Rapid Remover is a non-toxic, water-soluble adhesive remover that breaks down and removes adhesives fast. Spray it on, wait a few minutes, and easily wipe away residue adhesive with a plastic squeegee and paper towel.



50213433

**50213433**  
**SCRUB-IT BLUE/BLEU PAD**

The SCRUB-IT is a hand-held scrubbing tool that uses the leverage of the back of your hand to clean glass from contaminants or adhesive residue. The SCRUB-IT allows you to use your hand to reach in most places and scrub evenly throughout. Scrub-It is a one size fits all as it can be adjusted to all hand sizes with the attached Velcro strap.

The Blue Scrub-It (50213433) comes with a Blue color scrub pad that is more aggressive and used for removing adhesive from the glass. Please make sure to check newer vehicles for factory coatings that are applied to the inside of the glass that might be damaged by the Scrub-It.

**50213406**  
**SCRUB-IT PADS- BLUE (10 PACK)**

The Blue SCRUB-IT replacement pads come in a 10 pack. The blue pads are more aggressive and used for removing adhesive residue from glass. The pads are made of scratch resistant material but use with caution. Test on a small part of glass before use as not all glass is made the same!

Please make sure to check newer vehicles for factory coatings that are applied to the inside of the glass that might be damaged by the SCRUB-IT.



**50157569**  
**MICROFIBER CLOTH 16"X16"**

Suede Microfiber Towel that is smooth, soft, and self-absorbing. This towel is no lint and great for prep and installation.



**50190410\***  
**11x22 7 MIL**

Sized for New Car Monroney Price Sticker. Great option for any tint company preloading dealership cars. Recommend adhering Laminated Pricing to window with clear double-sided tape or suction cups. (Interior Placement)

\*Sold in cases of 400



**50165970\***  
**COLD LAMINATION SHEET 12 X 22**

Sized for New Car Monroney and Addendum Price Sticker. Great option for any tint company preloading dealership cars. Sealing all edges is important to protect laminated price sticker from rain and routine car washing. (Exterior Placement)

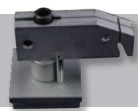
\*Sold in cases of 100

# SLITTERS & ACCESSORIES



**TOOL TIP**

The Film Handler will reduce waste, save labor and help complete jobs in a more timely manner. They can also be wall mounted for use in automotive applications.



**50149182**  
**FILM HANDLER CUTTER ASSEMBLY**

This is the base and the swivel head of the blade holder.



**50149591**  
**FILM HANDLER REPLACEMENT BLADES**

20 blades per cartridge.



**50212762**  
**FILM HANDLER REPAIR KIT**

Kit includes two knobs, two springs and one ball spring plunger.

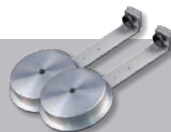


50149258  
50149257

**50149258**  
**1/8" SHIM FOR 3" HUBS**

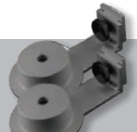
**50149257**  
**1/4" SHIM FOR 3" HUBS**

Sold as eaches (1).



**50184925**  
**6" ROLLER ASSEMBLY**

Use for security film on 6" cores. Comes with 12" risers to accommodate rolls of film on 6" cores. Sold as a pair (2).



**50157271**  
**3" ROLLER ASSEMBLY**

Standard roller assembly on Film Handler. These are 6" risers and will accommodate film on 3" cores. Sold as a pair (2).

**TOOL TIP**

To prevent damage to your Film Handler cutter head/blade holder always move the blade holder from the base not by the swivel head.

# METERS



**50149420**  
**ENFORCER II**

The TM1000 Enforcer II is a light weight and pocket sized automotive tint meter. It comes equipped with a coin cell battery that will last for up to 2500 uses and is auto calibrating. For rolldown windows only.



**50149235**  
**TM2000 INSPECTOR II**

The TM2000 Inspector II is the newest in two piece light meter technology allowing you to measure ALL windows on vehicles with auto calibration accurate to within +/-2%. This meter is 75% smaller than older models and carries a 1 year manufacturer's warranty.



**50149233**  
**SP1065 DIGITAL BTU SOLAR POWER METER**

This wide spectrum digital meter measures solar radiant energy intensity directly transmitted through glass (or the film-glass combination) in units of BTUs per square foot per hour or watts per square foot. Effective tool showing the relative effectiveness of various films in blocking solar radiant heat. Especially useful for showing how a very dark dyed film may allow far more energy to pass through than a much lighter metallic film. Can be switched to read in metric units. Powered by a 9-volt alkaline battery (included).



**50247996**  
**LOW E DETECTOR DISPOSABLE CARD**

# SAFETY FILM LABELS

**REQUIREMENTS AND BACKGROUND**

- For applications where a dealer is being asked to upgrade non-safety glass (usually annealed glass that breaks into large sharp, dangerous shards) to safety glass, this is accomplished by use of safety films.
- To be classified as a "safety film" the film must pass a test where a 100 lb weight impacts a large pane of glass with film applied. No hole or opening larger than 3-inches is allowed after impact. Two samples are impacted on the film side. Two samples are impacted on the glass side. All four samples must pass to obtain a pass for the test.
- The test is conducted from either an 18-inch or 48-inch drop height. The Consumer Product Safety Commission (CPSC) regulates the test standard. It is very similar to the ANSI Z97.1 test. If a product passes all the required 18-inch impacts it is given a CPSC Category I rating. If all samples successfully pass the 48-inch level the product is classified as CPSC Category II. Usually building inspectors ask for products that are CPSC Cat II, but not always.
- One of the requirements for most building inspectors is that the installing dealer label each window where safety film is applied so that anyone should be able to recognize the glass is safety glass. The label needs to be as permanent as possible. For safety films, we've created a unique label that should be applied to the window glass after the glass has been cleaned and prepped for safety film installation. Apply the label in one of the bottom corners. Then apply safety film over the label.
- **Each and every window must have the label applied that corresponds to the thickness of glass and the exact film installed.** Therefore, we have several safety film labels to choose from. Be sure to order the proper label for the glass and film in question.
- Should anyone request it, the corresponding independent-lab test reports for each film and glass combination are available on Story Slab.
- Only those films that have labels available have passed either the CPSC Cat I or Cat II test and only those films should be promoted as "safety films."

Supplier: Eastman Performance Films, LLC  
Organic-Coated Glass  
SunTek® 5M Symmetry 25  
CPSC 16 CFR 1201  
1/8" or 1/4" Cat I

**50220722**  
**5M SYMMETRY 25, 1/8" OR 1/4" CAT I**

Supplier: Eastman Performance Films, LLC  
Organic-Coated Glass  
LLumar® SCL SR PS7  
CPSC 16 CFR 1201  
1/8" or 1/4" Cat I 1/4" Cat II

**50220724**  
**SCL SR PS7, 1/8" OR ¼" CAT I, 1/4" CAT II**

Supplier: Eastman Performance Films, LLC  
Organic-Coated Glass  
LLumar® SCL SR PS8  
CPSC 16 CFR 1201  
1/8" or 1/4" Cat I 1/4" Cat II

**50220725**  
**SCL SR PS8, 1/8" OR ¼" CAT I, 1/4" CAT II**

Supplier: Eastman Performance Films, LLC  
Organic-Coated Glass  
LLumar® SCL SR PS13  
CPSC 16 CFR 1201  
1/8" or 1/4" Cat II

**50220726**  
**SCL SR PS13, 1/8" OR 1/4" CAT II**

Supplier: Eastman Performance Films, LLC  
Organic-Coated Glass  
SunTek® 4M Clear  
CPSC 16 CFR 1201  
1/8" or 1/4" Cat I

**50220727**  
**4M CLEAR, 1/8" OR 1/4" CAT I**

Supplier: Eastman Performance Films, LLC  
Organic-Coated Glass  
SunTek® 7M Clear  
CPSC 16 CFR 1201  
1/8" or 1/4" Cat I 1/4" Cat II

**50220728**  
**7M CLEAR, 1/8" OR ¼" CAT I, 1/4" CAT II**

SAFETY FILM LABELS

Supplier: Eastman Performance Films, LLC  
Organic-Coated Glass  
SunTek® 8M Clear  
CPSC 16 CFR 1201  
1/8" or 1/4" Cat I 1/4" Cat II

50220729  
6M CLEAR, 1/8" OR 1/4" CAT I, 1/4" CAT II

Supplier: Eastman Performance Films, LLC  
Organic-Coated Glass  
SunTek® 13M Clear  
CPSC 16 CFR 1201  
1/8" or 1/4" Cat II

50220730  
13M CLEAR, 1/8" OR 1/4" CAT II

Supplier: Eastman Performance Films, LLC  
Organic-Coated Glass  
LLumar® SCL SR PS4  
CPSC 16 CFR 1201  
1/8" or 1/4" Cat I

50220757  
SCL SR PS4, 1/8" OR 1/4" CAT I

Supplier: Eastman Performance Films, LLC  
Organic-Coated Glass  
SunTek® 9M Symmetry 15  
CPSC 16 CFR 1201  
1/8" or 1/4" Cat I

50220760  
9M SYMMETRY 15, 1/8" OR 1/4" CAT I

Supplier: Eastman Performance Films, LLC  
Organic-Coated Glass  
LLumar® DR15 SR PS5  
CPSC 16 CFR 1201  
1/8" or 1/4" Cat I

50220781  
DR15 SR PS5, 1/8" OR 1/4" CAT I

Supplier: Eastman Performance Films, LLC  
Organic-Coated Glass  
LLumar® DR15 SR PS9  
CPSC 16 CFR 1201  
1/8" or 1/4" Cat I

50220782  
DR15 SR PS9, 1/8" OR 1/4" CAT I

Supplier: Eastman Performance Films, LLC  
Organic-Coated Glass  
LLumar® DR25 SR PS5  
CPSC 16 CFR 1201  
1/8" or 1/4" Cat I

50220783  
DR25 SR PS5, 1/8" OR 1/4" CAT I

Supplier: Eastman Performance Films, LLC  
Organic-Coated Glass  
LLumar® DR25 SR PS9  
CPSC 16 CFR 1201  
1/8" or 1/4" Cat I

50220784  
DR25 SR PS9, 1/8" OR 1/4" CAT 1

Supplier: Eastman Performance Films, LLC  
Organic-Coated Glass  
LLumar® R20 SR PS5  
CPSC 16 CFR 1201  
1/4" Cat I

50220785  
R20 SR PS5, 1/4" CAT I

Supplier: Eastman Performance Films, LLC  
Organic-Coated Glass  
LLumar® R20 SR PS9  
CPSC 16 CFR 1201  
1/8" Cat I

50220786  
R20 SR PS9, 1/8" CAT I

Supplier: Eastman Performance Films, LLC  
Organic-Coated Glass  
SunTek® 5M Symmetry 15  
CPSC 16 CFR 1201  
1/8" or 1/4" Cat I

50220787  
5M SYMMETRY 15, 1/8" OR 1/4" CAT I

Supplier: Eastman Performance Films, LLC  
Organic-Coated Glass  
SunTek® 9M Symmetry 25  
CPSC 16 CFR 1201  
1/8" or 1/4" Cat I

50220791  
9M SYMMETRY 25, 1/8" OR 1/4" CAT I

Supplier: Eastman Performance Films, LLC  
Organic-Coated Glass  
SunTek® 5M Silver 20  
CPSC 16 CFR 1201  
1/4" Cat I

50220792  
5M SILVER 20, 1/4" CAT I

Supplier: Eastman Performance Films, LLC  
Organic-Coated Glass  
SunTek® 9M Silver 20  
CPSC 16 CFR 1201  
1/8" Cat I

50220793  
9M SILVER 20, 1/8" CAT I

PLOTTER BLADES / CUTTING STRIPS

GRAPHTEC

Blades

- 50205175  
CB09UB- K60 30' blade (TINT)
- 50228861  
CB09UB 45' blade (PPF)
- 50215631  
CB15U 60' blade (SAFETY / VINYL)  
(MUST BE USED WITH BLADE HOLDER  
GMN: 50149568 RED CAP BLADE HOLDER)

Blade Holders

- 50149355  
CB09U 0.9mm blade holder (TINT / PPF)
- 50149568  
CB15U 1.5mm blade holder (SAFETY / VINYL)

Blade Loupe

- 50222520  
Graphtec Blade Loupe (magnifier, blade setter)

Cross Cut Blades

- 50241731  
FC9000 Super Steel Cross Cut Blades
- 50175991  
FC8600 Cross Cut Blade

Teflon Cutting Strips

- 50222612  
FC9000-100 (42")
- 50222611  
FC9000-160 (64")
- 50205179  
FC MODELS (48")
- 50232701  
CE7000-130 (50")
- 50149358  
CE MODELS (48")

Starter Kits

- INCLUDES, BLADE HOLDER, 30' & 45' BLADES, 2 CUTTING STRIPS
- 50214121  
starter kit for FC9000-100 (42")
- 50214093  
starter kit for FC9000-160 (64")
- 50220826  
starter kit for CE7000-130 (50")

ROLAND AND GCC

Blades

- 50184905  
GCC Jaguar / Roland 25" blade
- 50184908  
GCC Jaguar / Roland 45" blade

Blade Holder

- 40156912  
GCC Jaguar / Roland Blade Holder

Blade Loupe

- 50222520  
Graphtec Blade Loupe (magnifier, blade setter)

Cutting Strips

- 50157278  
GCC Jaguar Cut Strip
- 50156861  
Roland Only Cut Strip

# GRAPHTEC PARTS / FC9000 / FC8600

## GRAPHTEC

### Main Boards

- 50175957**  
FC8000 / FC8600 Main Board
- 50247473**  
FC9000 All sizes Main Board

### Push Roller Assembly

- 50247493**  
FC9000 Push Roller Arm Assembly

### Cam Lever

- 50257399**  
FC9000 Cam Lever

### Y-Motor

- 50247469**  
FC8600 & FC9000 (works on both models)

### X-Motor

- 50247502**  
FC9000 (only works on FC9000)

### Pen Block Assembly

- 50247454**  
FC9000 Pen Block Assembly

### Control Panel

- 50247482**  
FC9000 Control Panel

### Dog Cam (metal tab only)

- 50247455**  
FC9000 Dog Cam

### Dog Cam Sensor / Board

- 50255754**  
FC9000 Dog Cam Circuit Board



# EASTMAN

©2025 Eastman Performance Films, LLC. Product brands referenced herein with a <sup>TM</sup> or © symbol are trademarks of Eastman Chemical Company or its subsidiaries. All other trademarks are the property of their respective owners. All rights reserved. No liability is accepted for errors. 05/25